



GAT MONTHLY MEMBERSHIP PROGRESS REPORT

Results as of: 5/31/2026

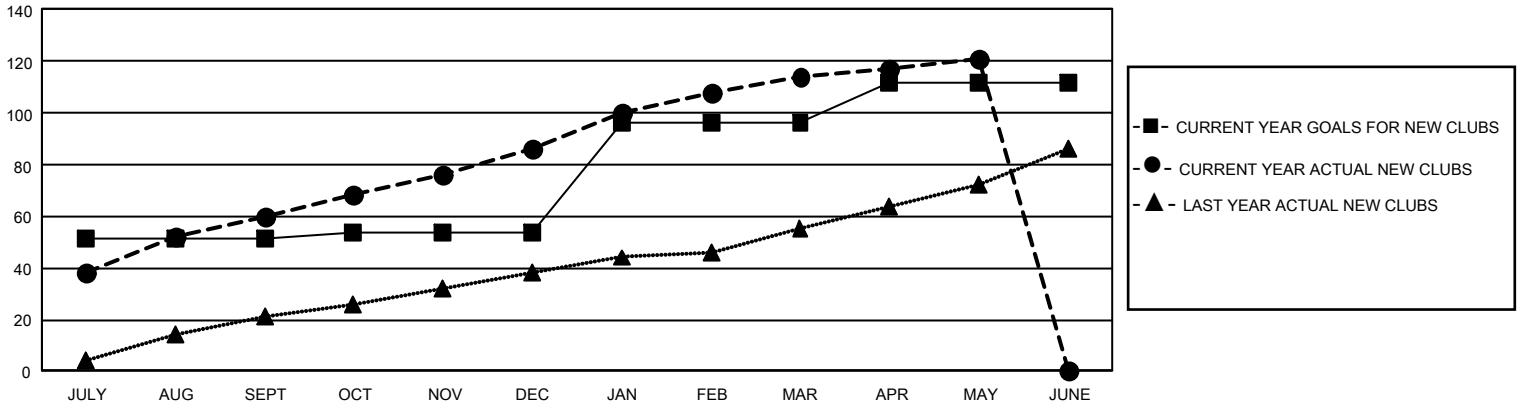
GMT Constitutional Area 6 - I, Group E

REPORT DOES NOT INCLUDE CLUBS IN UNDISTRICTED AREAS.

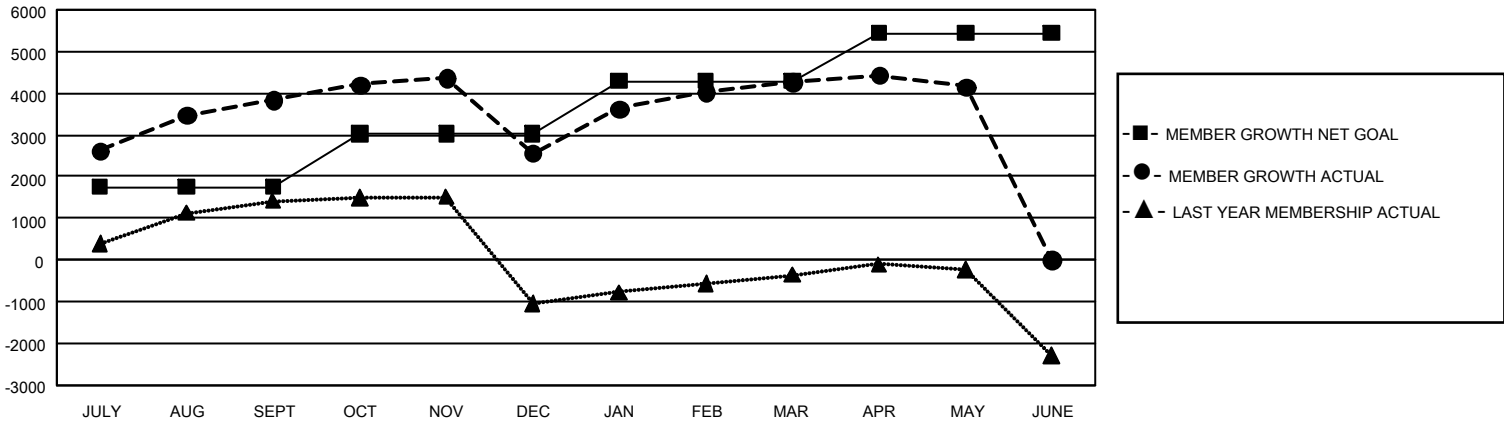
Clubs			
RESULTS FOR 2025-2026			
QUARTER	NEW CLUB GOAL	NEW CLUBS	DROPPED CLUBS
JULY/AUG/SEPT	153	60	6
OCT/NOV/DEC	9	26	38
JAN/FEB/MAR	126	28	8
APR/MAY/JUNE	48	7	0

Members			
RESULTS FOR 2025-2026			
QUARTER	MEMBER GROWTH NET GOAL	MEMBER GROWTH ACTUAL	DROPPED MEMBERS ACTUAL (including transfers)
JULY/AUG/SEPT	1753	4,778	696
OCT/NOV/DEC	1270	1,889	2,801
JAN/FEB/MAR	1270	2,495	521
APR/MAY/JUNE	1150	804	753

GOALS AND ACTUAL NEW CLUBS CUMULATIVE



GOALS AND ACTUAL MEMBERS CUMULATIVE



DROPPED CLUBS: 52 DROPPED MEMBERS DECEASED 163 CLUB CANCELLED 1,180 OTHER 3,409 TOTAL 4,752	1,104 CLUBS OF 1,598 ADDED 1 OR MORE NEW MEMBERS	GENDER DISTRIBUTION MALE 40,809 (78.65%) FEMALE 11,075 (21.34%) NON BINARY 0 (0.00%) PREFER NOT TO ANSWER 3 (0.01%)
	CLICK HERE FOR CUMULATIVE MEMBERSHIP DATA	TOTAL FAMILY UNIT MEMBERS 16,108 FAMILY MEMBERS PAYING HALF DUES 8,630